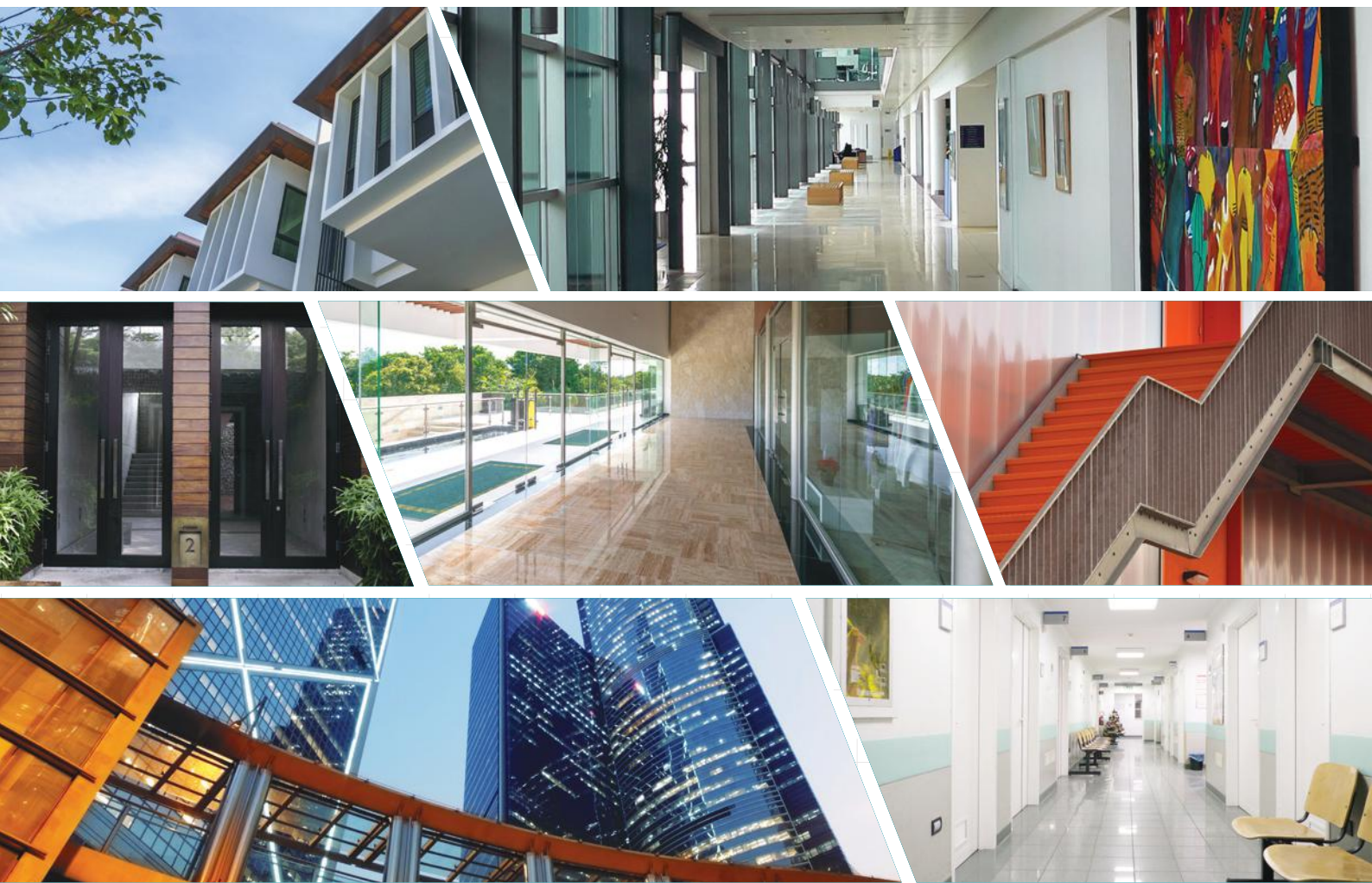


Door Furniture



SABRE[®]

ARCHITECTURAL

As a brand, Sabre Hardware has been a part of the architectural construction supply landscape for over 40 years. Originally launched by Specialty Hardware in Sydney, Sabre became part of the family-owned Access Hardware Group in 2010, facilitating more product investment and development to meet changing market demands.

Our strategic partnerships with manufacturers in the United States, China, Taiwan and Australia have been a cornerstone of our ability to meet customer needs. We will continue to invest in these partnerships to deliver on our mission statement; to always strive to offer quality hardware solutions at the right price. Before a product is branded Sabre, it is rigorously tested to ensure it meets market expectations.

The Sabre product range covers common product categories such as door controls, locksets, entrance handles, general hardware and commercial washroom equipment. Sabre branded products are dispatched daily to all states and territories from Access Hardware branches around Australia. To discuss a solution to your hardware needs, contact your nearest Access Hardware branch on 1800 555 600 to speak with an experienced customer service or sales representative.



1-4 Adjustable Spring Strength



4-6 Adjustable Spring Strength



2-4 Position Spring Strength



90° Hold Open



2-5 Adjustable Spring Strength



105° Hold Open



3 Fixed Strength



Back Check



3-5 Adjustable Spring Strength



Delayed Action



3-6 Adjustable Spring Strength



Parallel Arm Bracket



4 Fixed Strength



Made in the USA



10 Year Mechanical Warranty



Made from 304 Stainless Steel



5 Year Mechanical Warranty



AS1428.1 Compliant



Fire rated

Door Furniture

Lever on Rose

Lever on Rose Accessories

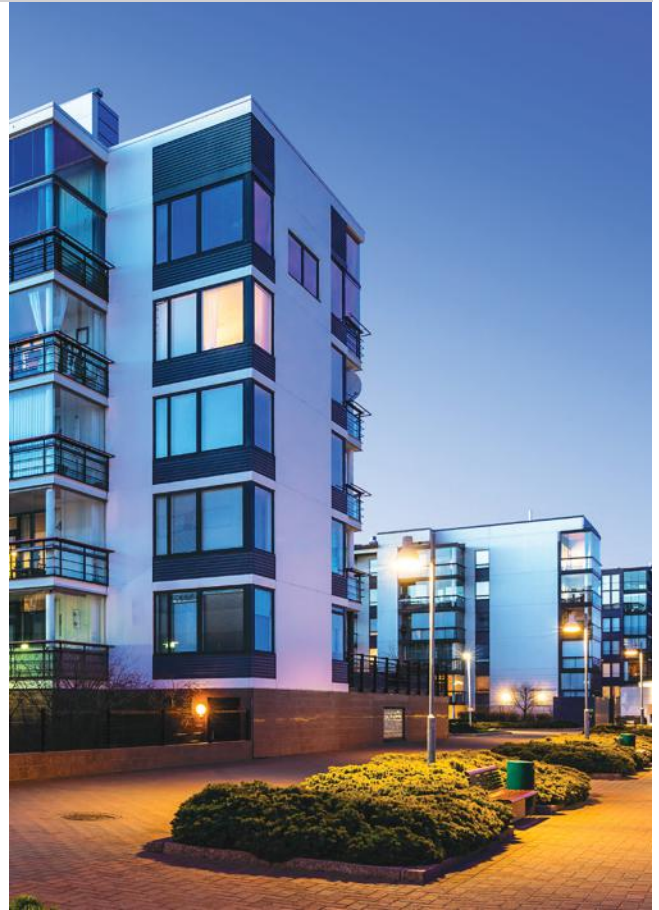
Narrow Style Square End Furniture

LEVER ON ROSE

SUITABLE FOR USE IN COMMERCIAL AND RESIDENTIAL APPLICATIONS

Making a statement doesn't get any easier when selecting from the Sabre R53 Series Stainless Steel designer range of levers and accessories. The range provides a generous selection of designs for both commercial and residential applications including options for accessible compliance. Engineered to exceed 500,000 cycles gives the end user peace of mind knowing their purchase is backed by a 10 year mechanical warranty. The R53 Series is made from durable and low maintenance 304 stainless steel which is aesthetically appealing for the home or office. The rose size has carefully been considered to be matched with industry leading brands of commercial mortice locks and combined with Sabre's high quality tubular latches and privacy bolts.

- 53mm diameter x 10mm rose
- Non handed (site adjustable)
- Suitable for doors between 34mm to 50mm in thickness
- Tested for durability for up to 500,000 cycles



Lever Designs

H01



H02



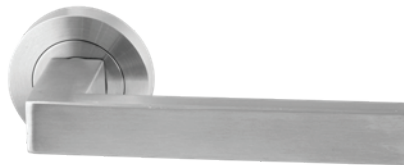
H03



H04



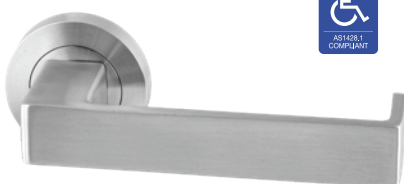
H05



S06



S07



Privacy Set

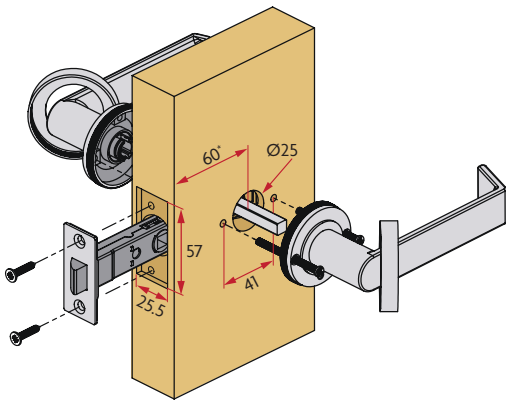
- Push on rose provides concealed fixing for both internal and external levers
- Designed for use with tubular latches and mortise locks with a minimum 45mm backset
- Suitable for use in residential applications



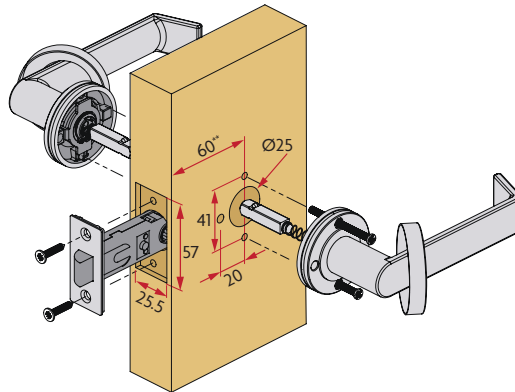
LEVER ON ROSE

DOOR PREP

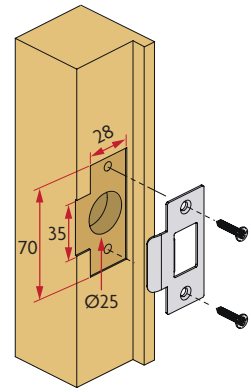
LEVER SET



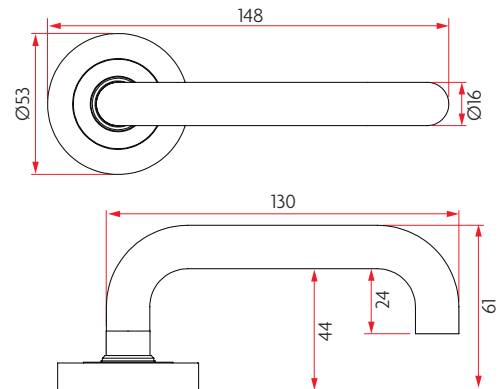
PRIVACY SET



STRIKE PLATE



H01 - Hollow



CODE

SAB-LS-R53-H01 (Lever)
SAB-PS-R53-H01 (Privacy)

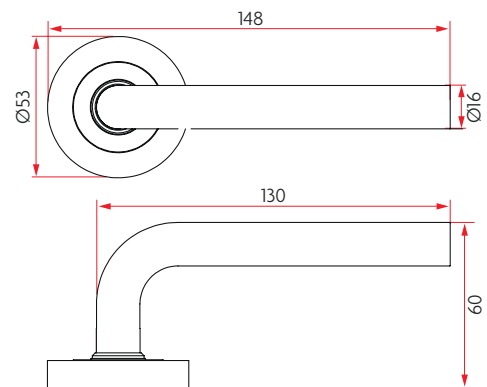
FINISH

SSS - Satin Stainless Steel

DETAILS

- Lever Set - includes set of levers, 2x50mm, 2x65mm fixing screws
- Privacy Set - includes set of levers, privacy latch, privacy pin, 2 split spindles and springs, strike plate and 2x50mm, 2x65mm fixing screws.

H02 - Hollow



CODE

SAB-LS-R53-H02 (Lever)
SAB-PS-R53-H02 (Privacy)

FINISH

SSS - Satin Stainless Steel

DETAILS

- Lever Set - includes set of levers, 2x50mm, 2x65mm fixing screws
- Privacy Set - includes set of levers, privacy latch, privacy pin, 2 split spindles and springs, strike plate and 2x50mm, 2x65mm fixing screws.

LEVER ON ROSE

H03 - Hollow



CODE

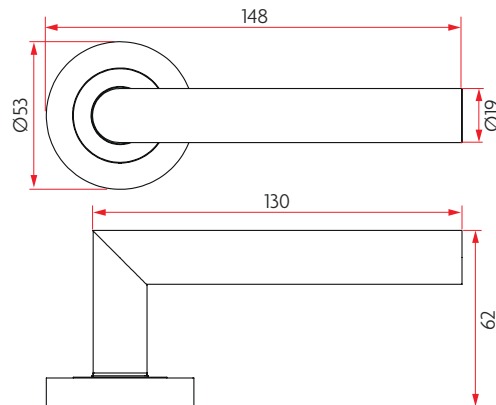
SAB-LS-R53-H03 (Lever)
SAB-PS-R53-H03 (Privacy)

FINISH

SSS - Satin Stainless Steel

DETAILS

- Lever Set - includes set of levers, 2x50mm, 2x65mm fixing screws
- Privacy Set - includes set of levers, privacy latch, privacy pin, 2 split spindles and springs, strike plate and 2x50mm, 2x65mm fixing screws.



H04 - Hollow



CODE

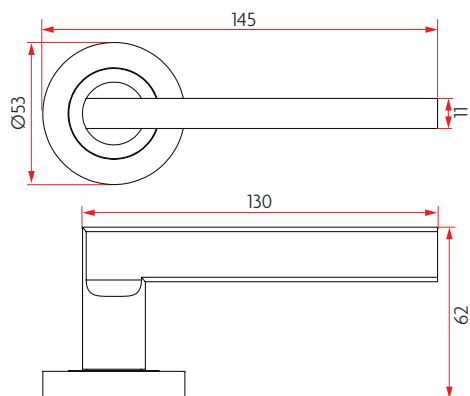
SAB-LS-R53-H04 (Lever)
SAB-PS-R53-H04 (Privacy)

FINISH

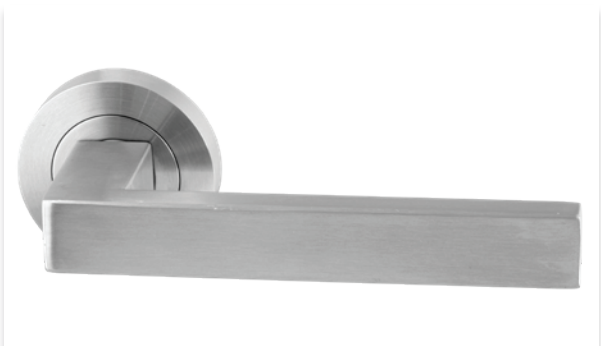
SSS - Satin Stainless Steel

DETAILS

- Lever Set - includes set of levers, 2x50mm, 2x65mm fixing screws
- Privacy Set - includes set of levers, privacy latch, privacy pin, 2 split spindles and springs, strike plate and 2x50mm, 2x65mm fixing screws.



H05 - Hollow



CODE

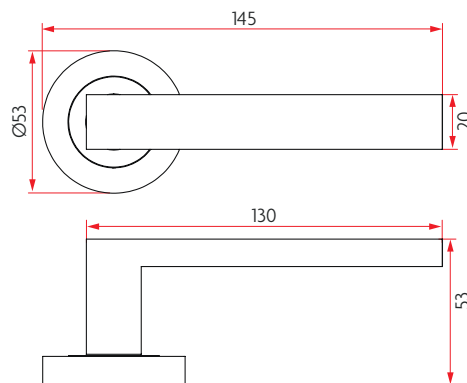
SAB-LS-R53-H05 (Lever)
SAB-PS-R53-H05 (Privacy)

FINISH

SSS - Satin Stainless Steel

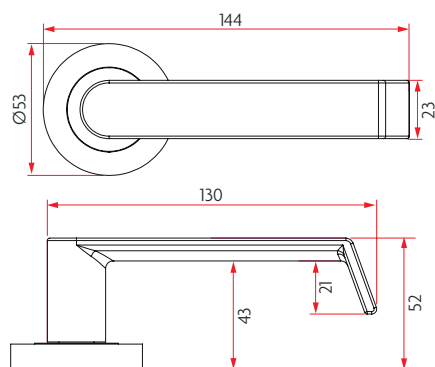
DETAILS

- Lever Set - includes set of levers, 2x50mm, 2x65mm fixing screws
- Privacy Set - includes set of levers, privacy latch, privacy pin, 2 split spindles and springs, strike plate and 2x50mm, 2x65mm fixing screws.



LEVER ON ROSE

S06 - Solid



CODE

SAB-LS-R53-S06 (Lever)
SAB-PS-R53-S06 (Privacy)

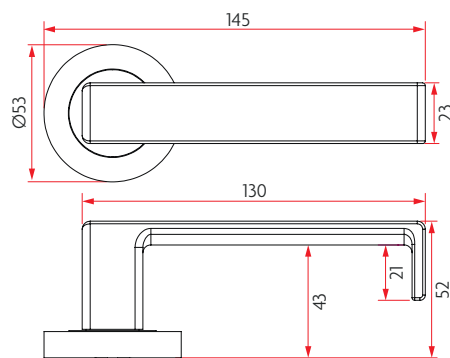
FINISH

SSS - Satin Stainless Steel

DETAILS

- Lever Set - includes set of levers, 2x50mm, 2x65mm fixing screws
- Privacy Set - includes set of levers, privacy latch, privacy pin, 2 split spindles and springs, strike plate and 2x50mm, 2x65mm fixing screws.

S07 - Solid



CODE

SAB-LS-R53-S07 (Lever)
SAB-PS-R53-S07 (Privacy)

FINISH

SSS - Satin Stainless Steel

DETAILS

- Lever Set - includes set of levers, 2x50mm, 2x65mm fixing screws
- Privacy Set - includes set of levers, privacy latch, privacy pin, 2 split spindles and springs, strike plate and 2x50mm, 2x65mm fixing screws.

Tubular Latch 60mm



CODE

SAB-TL-60-T

FINISH

SSS - Satin Stainless Steel

DETAILS

- 60mm backset
- includes solid 7.6mm x 75mm spindle, T shaped strike plate and fixing screws

Tubular Privacy Latch 60mm



CODE

SAB-PL-60

FINISH

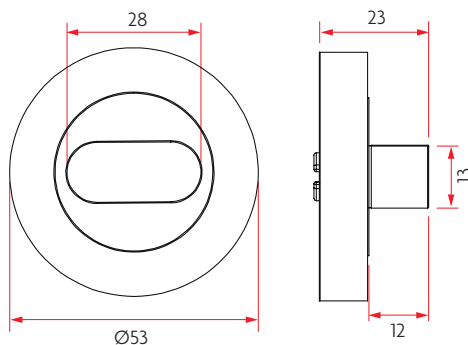
SSS - Satin Stainless Steel

DETAILS

- 60mm backset
- includes privacy pin, 2 split spindles with springs, T shaped strike plate and fixing screws

LEVER ON ROSE - ACCESSORIES

Standard Turn Snib



CODE

SAB-ST5-R53

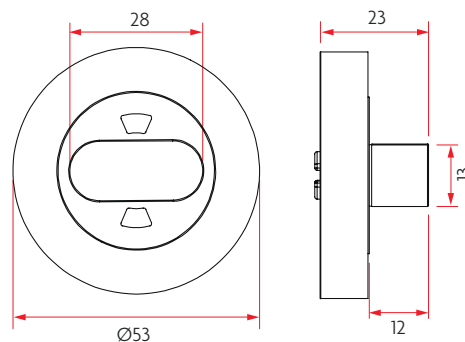
FINISH

SSS - Satin Stainless Steel

DETAILS

- Non handed
- 4 x 16mm fixing screws
- 6.5mm x 45mm tail piece

Indicating Turn Snib



CODE

SAB-ITS-R53

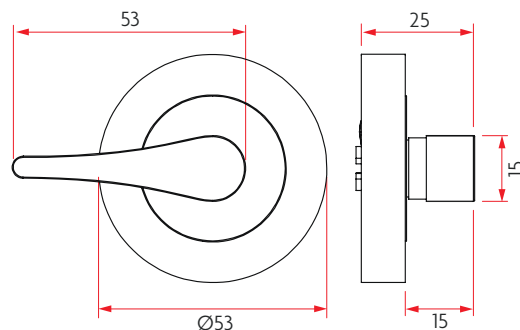
FINISH

SSS - Satin Stainless Steel

DETAILS

- Indicates red when door is locked
- Non handed
- 4 x 16mm fixing screws
- 45mm x 6mm tail piece

Accessible Turn Snib



CODE

SAB-ATS-R53

FINISH

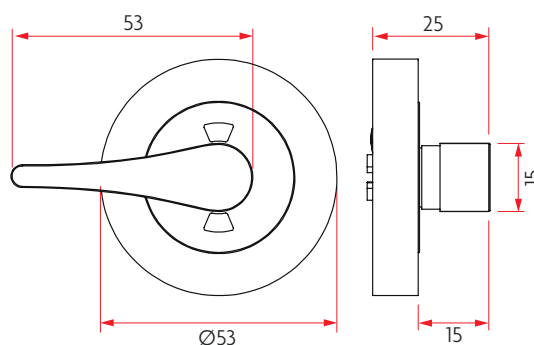
SSS - Satin Stainless Steel

DETAILS

- Non handed
- 4 x 16mm fixing screws
- 6.5mm x 45mm tail piece

LEVER ON ROSE - ACCESSORIES

Indicating Accessible Turn Snib - RH



CODE

SAB-IAT-R53-RH

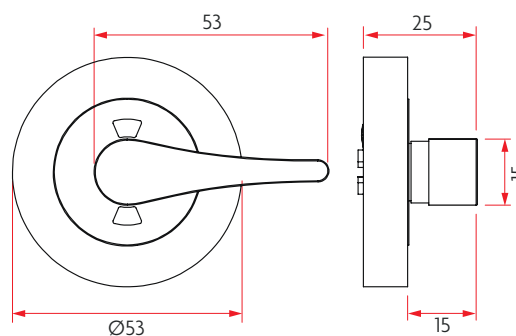
FINISH

SSS - Satin Stainless Steel

DETAILS

- Suits left hand functioned locks
- Indicates red when locked
- Indicates green when unlocked
- 45mm x 6mm tail piece
- 4 x 16mm fixing screws

Indicating Accessible Turn Snib - LH



CODE

SAB-IAT-R53-LH

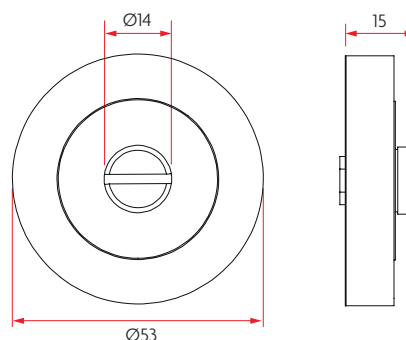
FINISH

SSS - Satin Stainless Steel

DETAILS

- Suits right hand functioned locks
- Indicates red when locked
- Indicates green when unlocked
- 45mm x 6mm tail piece
- 4 x 16mm fixing screws

Emergency Slotted Turn



CODE

SAB-EST-R53

FINISH

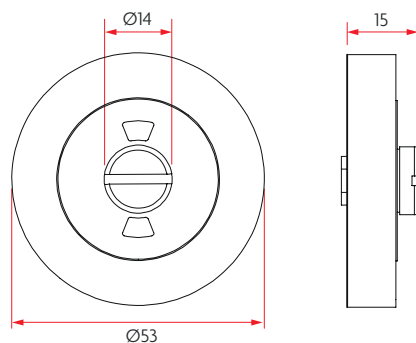
SSS - Satin Stainless Steel

DETAILS

- 4 x 16mm fixing screws

LEVER ON ROSE - ACCESSORIES

Indicating Emergency Slotted Turn



CODE

SAB-IES-R53

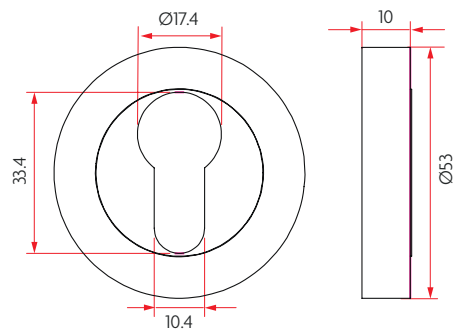
FINISH

SSS - Satin Stainless Steel

DETAILS

- Emergency slot for emergency opening
- Non handed
- Indicates red when locked
- Indicates green when unlocked
- 4 x 16 fixing screws

Euro Cylinder Escutcheon



CODE

SAB-ECE-R53

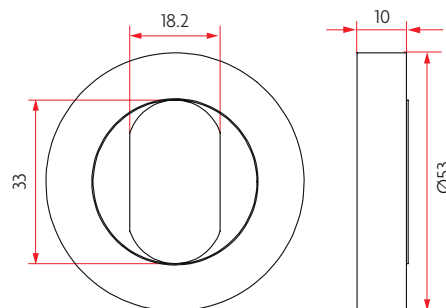
FINISH

SSS - Satin Stainless Steel

DETAILS

4 x 16mm fixing screws

Oval Cylinder Escutcheon



CODE

SAB-OCE-R53

FINISH

SSS - Satin Stainless Steel

DETAILS

4 x 16mm fixing screws

LEVER ON ROSE - ACCESSORIES

Tubular Privacy Bolt 60mm



CODE

SAB-PB-60

FINISH

SSS - Satin Stainless Steel

DETAILS

- 60mm backset
- suits 6.5mm flat and 4.5mm star tail pieces
- includes a flat strike plate

NARROW STYLE SQUARE END FURNITURE

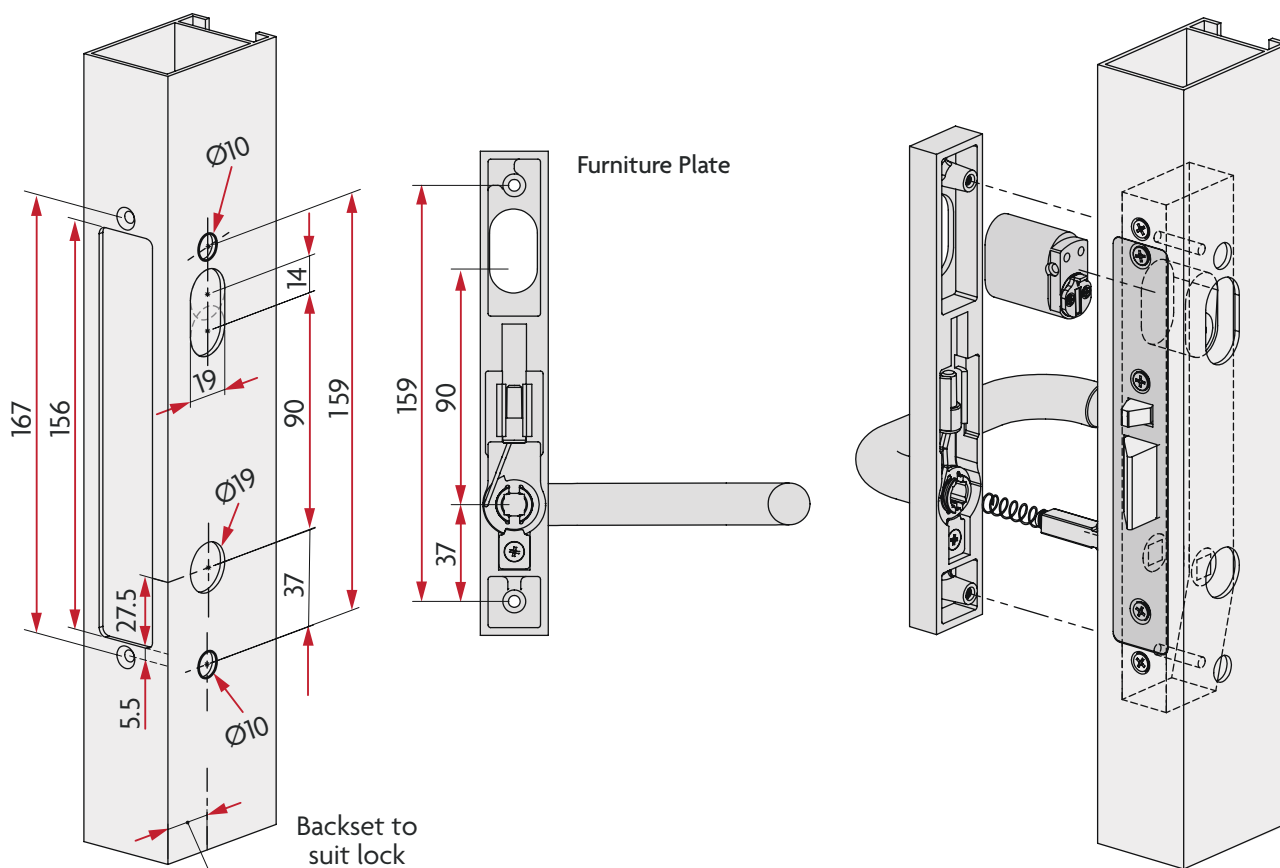
FOR USE WITH COMMERCIAL SHORT BACKSET MORTICE LOCKS

Sabre narrow style plate furniture has been engineered and manufactured from high quality materials and machining processes. The narrow plate design allows it to be combined with many of Australia's leading brands of commercial short backset mortice locks. The lever design and accessible turn snib meet AS1428.1 design requirements. Many hours of testing has gone into developing the product ensuring it can withstand the heavy demands of high use commercial doors. The range includes multiple plate options both external and internal for secure back to back fixing.

- Plate size 185mm x 26mm x 12mm
- Suitable for doors between 35 and 50mm in thickness
- Tested for durability for up to 300,000 cycles
- Non handed lever
- Back to back fixing



DOOR PREP



NARROW STYLE SQUARE END FURNITURE

Concealed Fix Plate Only



CODE

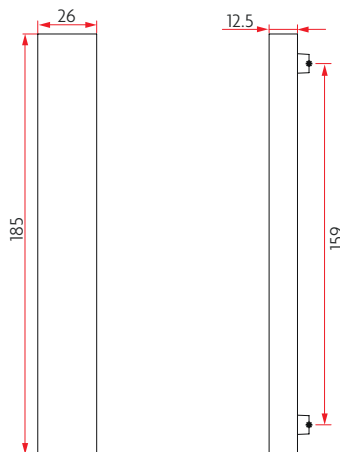
SAB-NSS-CPO

DETAILS

2 x M4 x 65mm fixing screws

FINISH

SSS - Satin Stainless Steel



Concealed Fix Cylinder Hole Only



CODE

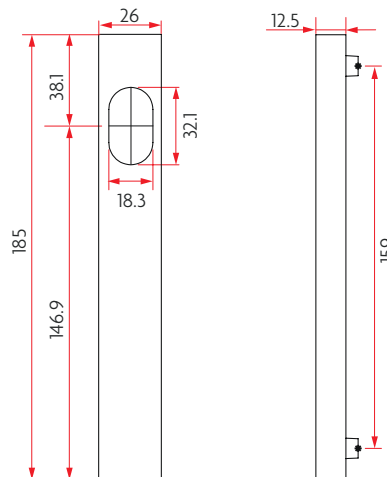
SAB-NSS-CCO

DETAILS

2 x M4 x 65mm fixing screws

FINISH

SSS - Satin Stainless Steel



Concealed Fix Lever Only



CODE

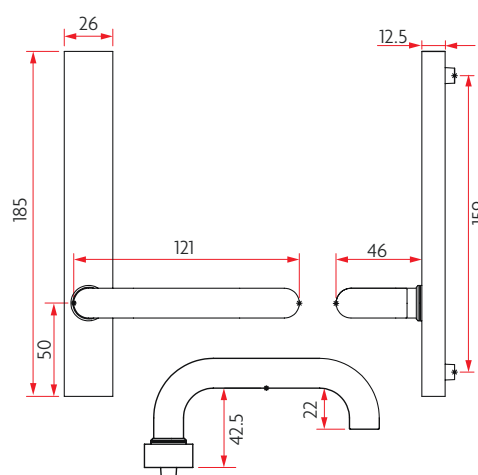
SAB-NSS-CLO-H01

DETAILS

2 x M4 x 65mm fixing screws

FINISH

SSS - Satin Stainless Steel



NARROW STYLE SQUARE END FURNITURE

Concealed Fix Cylinder Lever



CODE

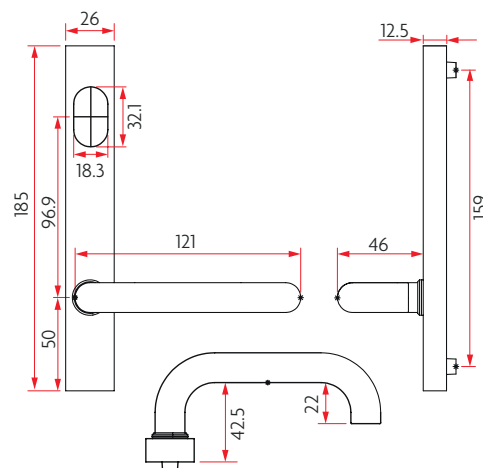
SAB-NSS-CCL-H01

DETAILS

2 x M4 x 65mm fixing screws

FINISH

SSS - Satin Stainless Steel



Concealed Fix Emergency Lever



CODE

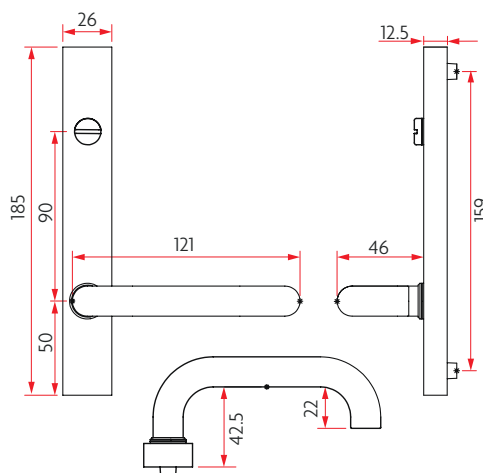
SAB-NSS-CEL-H01

DETAILS

2 x 65mm fixing screws

FINISH

SSS - Satin Stainless Steel



Visible Fix Plate Only

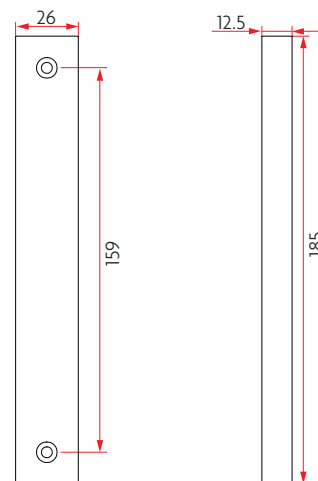


CODE

SAB-NSS-VPO

FINISH

SSS - Satin Stainless Steel



NARROW STYLE SQUARE END FURNITURE

Visible Fix Cylinder Hole Only

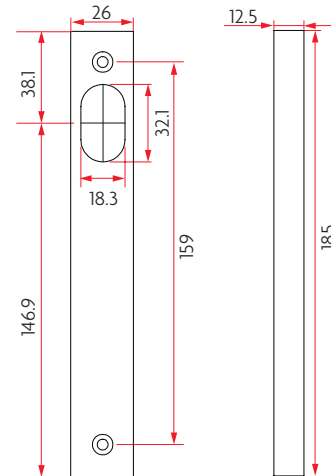


CODE

SAB-NSS-VCO

FINISH

SSS - Satin Stainless Steel



Visible Fix Turn Only

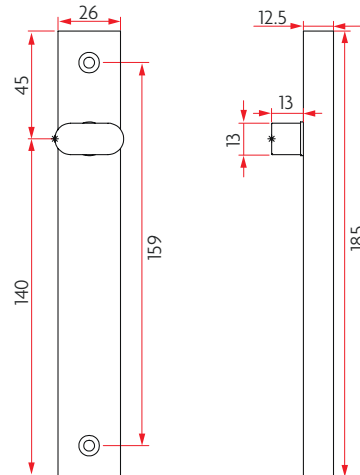


CODE

SAB-NSS-VTO

FINISH

SSS - Satin Stainless Steel



Visible Fix Lever Only

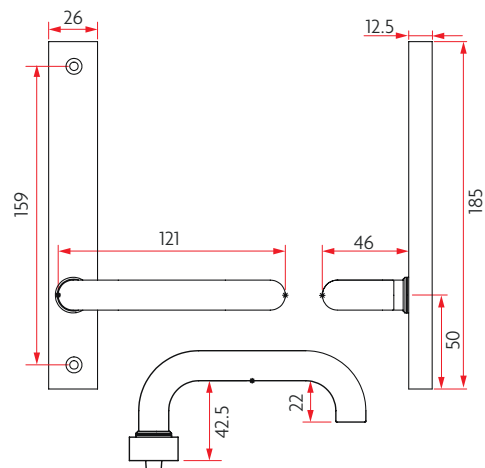


CODE

SAB-NSS-VLO-H01

FINISH

SSS - Satin Stainless Steel



NARROW STYLE SQUARE END FURNITURE

Visible Fix Cylinder Lever

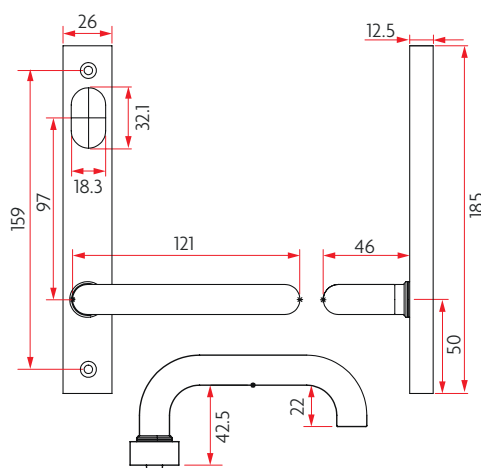


CODE

SAB-NSS-VCL-H01

FINISH

SSS - Satin Stainless Steel



Visible Fix Turn Lever

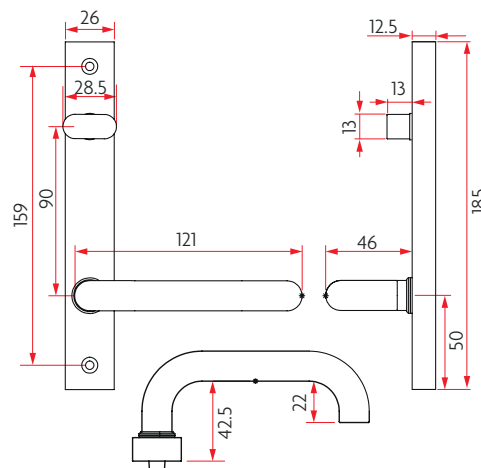


CODE

SAB-NSS-VTL-H01

FINISH

SSS - Satin Stainless Steel



Visible Fix Accessible Lever

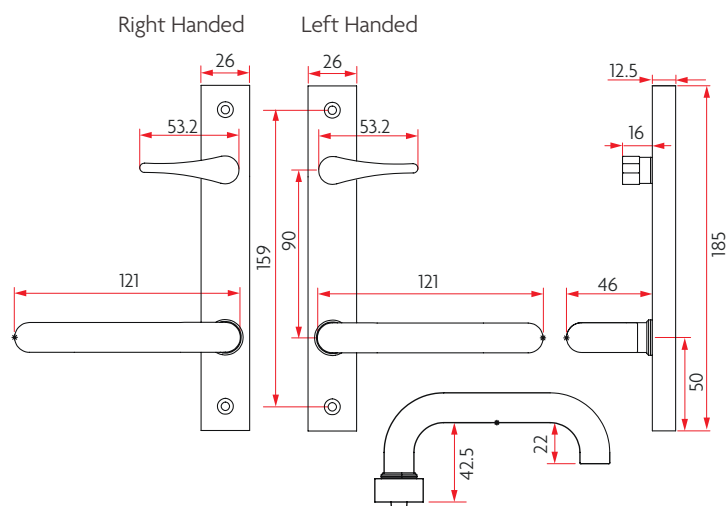


CODE

SAB-NSS-VAL-H01-L (as shown)
SAB-NSS-VAL-H01-R

FINISH

SSS - Satin Stainless Steel





VIC

Head Office

Address: 74-92 Gracie Street
North Melbourne VIC 3051
Phone: (03) 9320 1800
Email: vic@accesshardware.com.au

NSW

Address: Unit 3, Heritage Business Park
5-9 Ricketty Street
Mascot NSW 2020
Phone: (02) 9669 1100
Email: syd@accesshardware.com.au

QLD

Address: Unit 4, 36 Turbo Drive
Coorparoo QLD 4151
Phone: (07) 3304 7400
Email: qld@accesshardware.com.au

trading as FRANKsecure

Address: Unit 1, 53 Newheath Drive
Arundel QLD 4214
Phone: (07) 5588 0100
Email: accounts@franksecure.com.au

SA

Address: 20 Manton Street
Hindmarsh SA 5007
Phone: (08) 8422 8700
Email: sa@accesshardware.com.au

NT

Address: Unit 1, 51 Albatross Street
Winnellie NT 0820
Phone: (08) 8984 4566
Email: nt@accesshardware.com.au

TAS - LAUNCESTON

Access Hardware (TAS) Pty Ltd
Address: 12 Goodman Court
Launceston TAS 7248
Phone: (03) 6324 4900
Email: tas@accesshardware.com.au

TAS - HOBART

Access Hardware (TAS) Pty Ltd
Address: 131a Albert Road
Moonah TAS 7009
Phone: (03) 6235 9000
Email: tas@accesshardware.com.au